

Wednesday, June 06, 2007 -- Repainted 2 canvases



1) Total over painting. Went with impulse generated by *first idea move*, and executed it. Of course, while painting other improvised moves were incorporated.

This is the fourth repaint of this piece. each of these repaint sessions consisted of a total rework/covering of the image.

The decision to repaint #1 was determined by practicing automatism and executing the *first idea move*. As I was studying painting #2 on the vertical wall easel, I turned around to glance and painting #1 (still on its studio stretch/work frame and located on wall behind me). An idea came to me on what to do with this painting-- I had determined earlier in this painting session that I didn't like



the painting and it needed to go. I envisioned the color and a vague idea of where should take the image. I set to doing this. No procrastination. No resistance. I just did it. This is the 4th major repaint for this painting.

6/8/2007 12:26 PM: new thought: this rework #4, brings into focus what I feel is a *center* for my work. By *center* I mean—this image brings out a core value that I am trying to achieve through my images. An image that reflects the *real me*. Further definition—creates the *best case mirror* that I am capable of at any given moment along my working/making time line.



= up direction or top of all 4 images on this page

Session 1) no notes recorded



2) While working on #1 (placed on floor easel), I placed this painting on the floor to the left of the floor easel. So happens that it was placed so I viewed it upside down. Repainting was partial using some of the colors in the repaint of #1.

As I was looking at this painting after placing it on the floor, I had an idea that some of the cream color needed to be added to this painting. I wiped off a palette knife load of the cream paint, then dipped a brush in my soap rinse bucket, and mashed the paint around. One thing led to another,-- the trance was entered, and I did further work on this piece.

Session 2) see notes "2)"

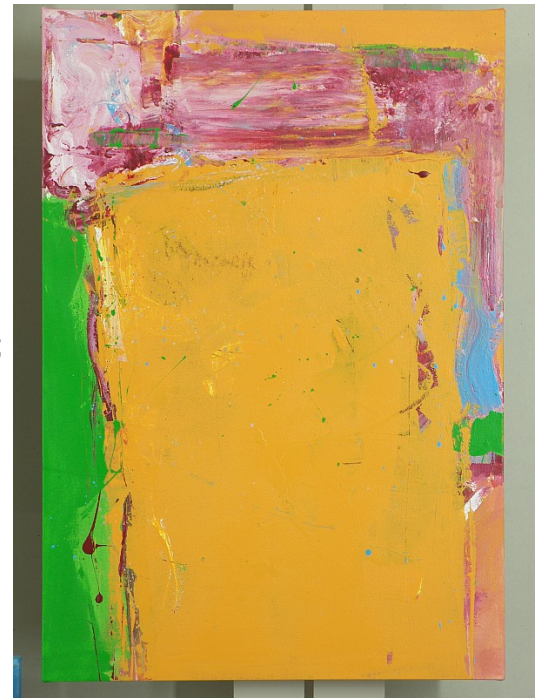


Session three: Total repaint – while working on the LS painting in “a)” – had an idea oh now to continue working on this painting.

Outlined new idea in white chalk and labeled area as “orange”.



Colors: id0083 Moroccan Sands/orange [Glidden Evermore Satin Enamel]; id0077 Magenta S [Behr PremPlus Int Satin Enamel]; repaint of green shape LS id0084 Par Four Green [Behr PremPlus Int Satin Enamel]; blue accent on RS id0023 Windjammer Blue [Behr PremPlus Int Satin Enamel].



Troubled by the stuff going on in upper a)

left corner. However, this area seems to be important enuff to exist as is for the moment



8/23/07

At right is a **digital proposal** for next painting session. This is to be used only as a guide and not a map to be followed with a scribe.



Session Four) 08/21/07: decided that painting had dead-ended - painted out entire surface. Now time to start anew.

Automatism rules here!!!!

This paint-out is way too minimal. Not direction of interest here.





Session Five: 08/24/07.

Executed using digital proposal illustrated above running in a selection of digital *first solution idea* proposals. Sounds schizophrenic, but *first solution ideas* can be adjusted with new or additional (combined) *first solution ideas*.